

Earth's Dynamics: Cosmic Drivers

PRIMARY COSMIC DRIVERS (ENERGY INPUT 100%)

≈95.5%

H₂O ENTHALPY MEDIATOR

ARTIFICIAL

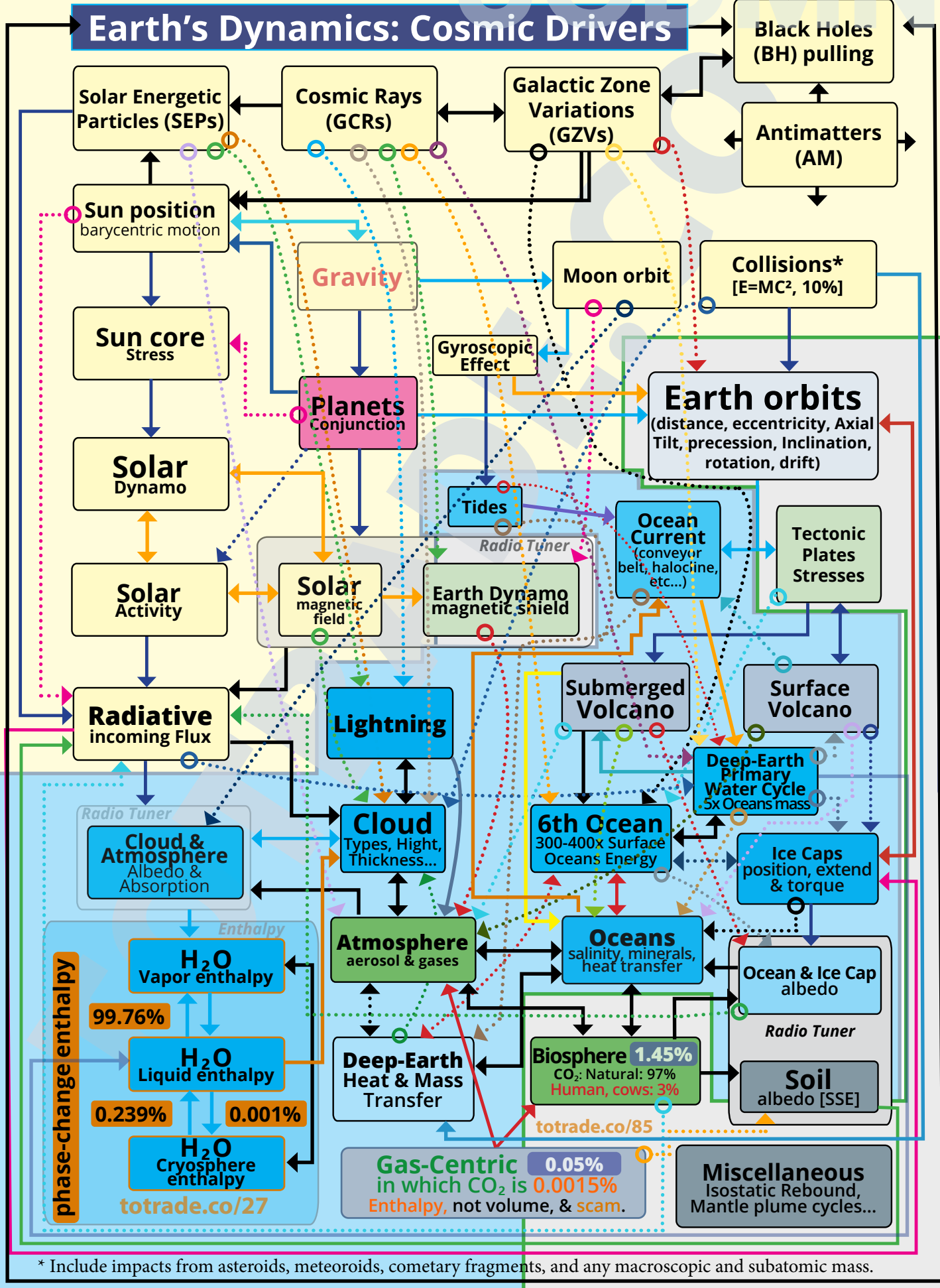
VENUS

MARS

MOON DYNAMICS

≈3.00%

SOLID STATE ENTHALPY (SSE)



* Include impacts from asteroids, meteoroids, cometary fragments, and any macroscopic and subatomic mass.

ToC

Legend: —> Solid = Direct, ○-...> Dotted = Indirect

Unsettled Science

Web

Climate response linked to ionization, not CO₂ forcing

Solar Energy

GCR superiority

Low frequency GCRs

High Quantity, Extreme ionization

from heliosphere, Van Allen Belts, all atmosphere layers to core

→ The Planck Relation.

High frequency photons

Surface radiation
→ Clausius-Caplayron Relation

- ▶ Seasonal heat peaks, surface energy only
- ▶ Low penetration depth, surface heating.
- Short-term heat variability

- ▶ Stronger ionization across key regions
- ▶ Increase lightning
- converts N₂ and O₂ into nitrates NO₃⁻

- ▶ Cloud type, hight, thickness
- Not Cloud coverage alone

- ▶ Extreme energy per particle
- ▶ Enter atmosphere, ocean, crust, and mantle, long-term
- ▶ Triggers secondary particle cascades, create volumetric energy deposition across the whole planet

- ▶ More nitrates NO₃⁻ in the soil
- Increase fruiting and other benefits

TOTRADE™
FEWS SYSTEM
Food • Energy • Water • Space

2030+

ToC

- ▶ Surface heating is not system control
- Ionization and field strength define the regime



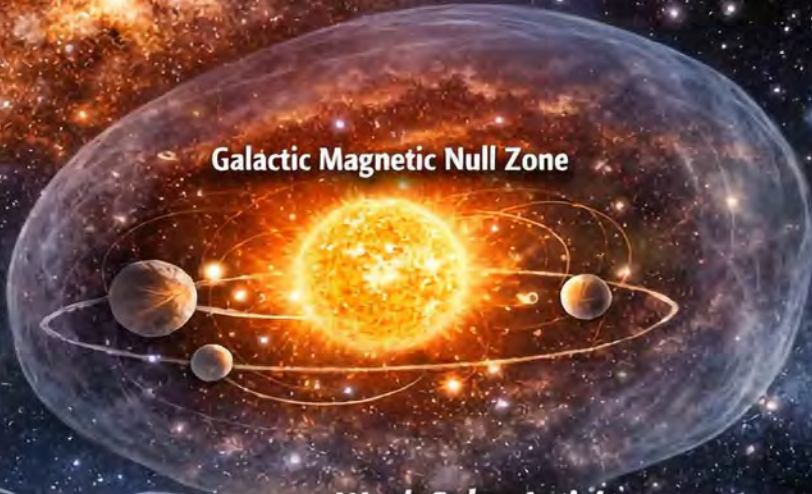
totrade.co/p42

UCDMN GALACTIC COSMIC CYCLES

ENTERING A MAGNETIC NULL ZONE

Galactic Cosmic Ray Surges
Every 5,000–35,000 Years

22-Year Crest
11-Year Peak



Galactic Magnetic Null Zone

Weak Solar Activity

Increased GCRs
by 2036

Low frequency GCRs

High Quantity, Extreme ionization
from heliosphere, Van Allen Belts,
all atmosphere layers to core
→ The Planck Relation.



Weak Earth's Magnetic Field



Atmospheric Ionization

- Extreme Storms & Lightning



Geodynamo Instability

- Magnetic Anomalies & Reversals



Mantle Stress

- Quakes, Volcanoes & Tsunamis



ToC

Global Disruption & Earth Changes



totrade.co/p43

Cosmic Power Budget at Earth Scale

TOTRADE™

True Limitless Clean Power

Solar Power

20% ≈ 173,000 TW

Variation:
0.01% to 0.03%
(173 to 520 TW)

High frequency photons

Surface radiation
→ Clausius-Caplayron
Relation

Other Cosmic Drivers

70% ≈ 605,000 TW

Variation:
0.01% to 2%
(60 to 12,100 TW)

Low frequency GCRs

High Quantity, Extreme ionization
from heliosphere, Van Allen Belts,
all atmosphere layers to core
→ The Planck Relation.

Collisions

10% ≈ 86,500 TW

Meteoroids & Impacts

Cosmic Rays &
High-Energy Particles

Earth's Heat

≈ 50 TW

Variation:
0.05% to 20%
(0.25 to 10 TW)

TOTRADE™
FEWS SYSTEM
Food • Energy • Water • Space

- Atmosphere Regulates Timing
- Water Stores & Buffers Energy
- Earth Acts as a Charged System

ToC

Web

The Planck Relation

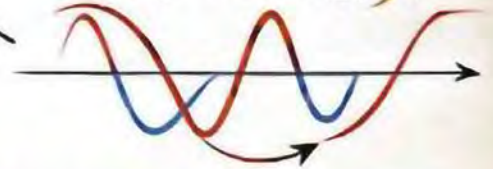
$$E = h\nu$$

E = Energy of a photon (joules, J)

h = Planck's Constant
 $= 6.626 \times 10^{-34} \text{ J}\cdot\text{s}$

ν = Frequency of radiation (hertz, Hz)

ν = Frequency
 ($\nu \uparrow \Rightarrow \text{Energy} \uparrow$)



Meaning:

- Energy is quantized (in packets called photons)
- Directly proportional to frequency (ν)
- Higher $\nu \Rightarrow$ Higher E
- No photon exists with $E = 0$

Planck's Constant (h):

$$h = 6.626 \times 10^{-34} \text{ J}\cdot\text{s}$$

- Fundamental constant of nature
- Related to quantum theory
- Units: Joule-second (J·s)

Energy of a Photon:

$$E = h\nu = (6.626 \times 10^{-34})(\nu)$$

- ν in Hz \rightarrow E in Joules (J)
- Example:

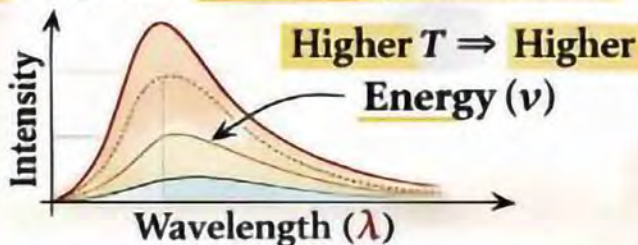
$$\nu = 5 \times 10^{14} \text{ Hz}$$

$$E = (6.626 \times 10^{-34})(5 \times 10^{14})$$

$$E = 3.31 \times 10^{-19} \text{ J}$$

Consequences:

1. Explains Blackbody Radiation



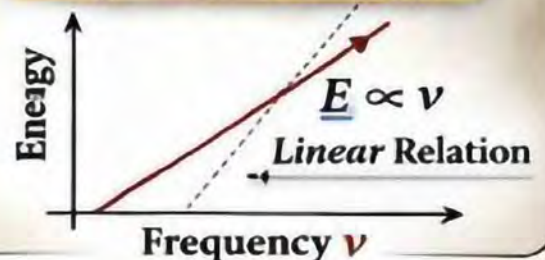
2. Foundation of Quantum Mechanics

3. Photoelectric Effect:



$$E_{\text{photon}} = h\nu = \text{Work Function} + E_{\text{kinetic}}$$

Frequency vs Energy:



Other Related Equations:

Photon Momentum:

$$p = \frac{h}{\lambda}$$

(λ = wavelength)

Angular Frequency:

$$E = \hbar\omega$$

($\hbar = h/2\pi$, $\omega = 2\pi\nu$)

Wavelength Relation:

$$E = \frac{hc}{\lambda}$$

(c = speed of light)



Max Planck (1858-1947)
 Nobel Prize in Physics (1918)

“Energy is quantized and proportional to frequency.”



~100 km Kármán line: ~0.000 000 1 atm

Weather is Driven By **Clausius-Clapeyron** Relation

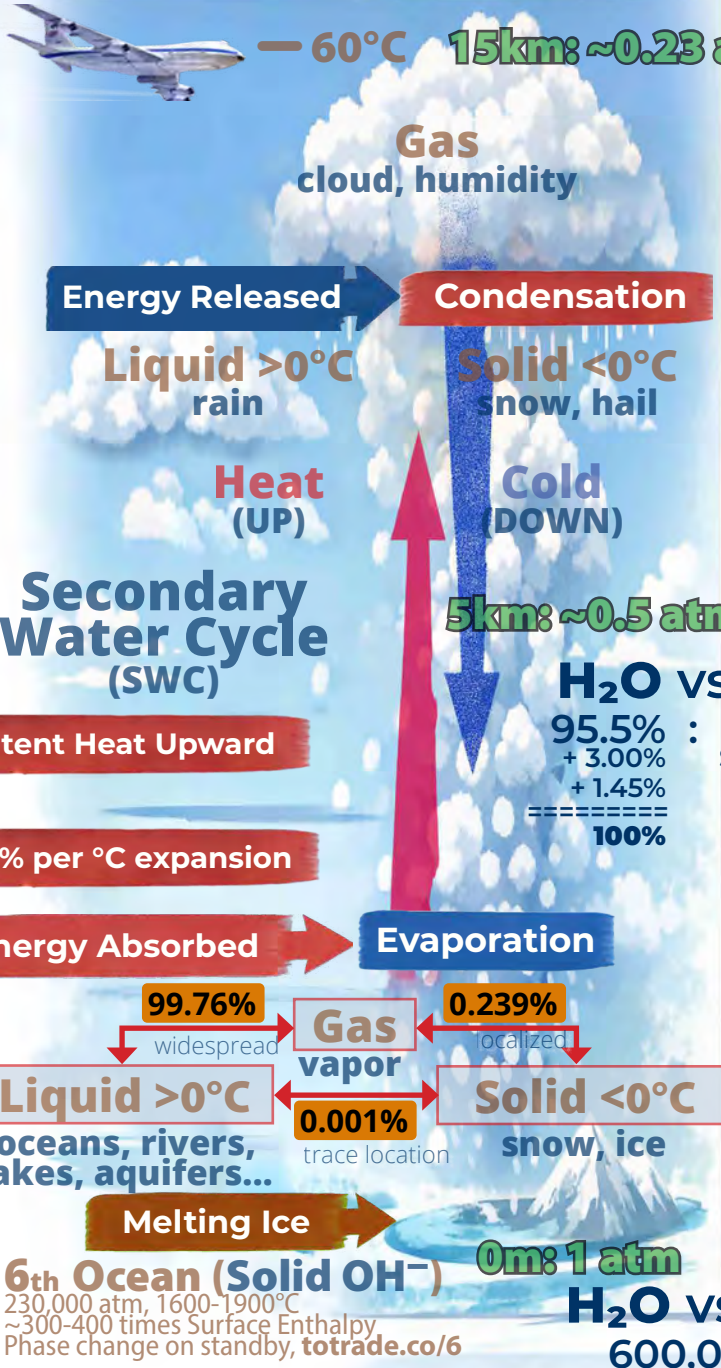


$$H = U + pV$$

Enthalpy = Internal Energy + Expansion Work

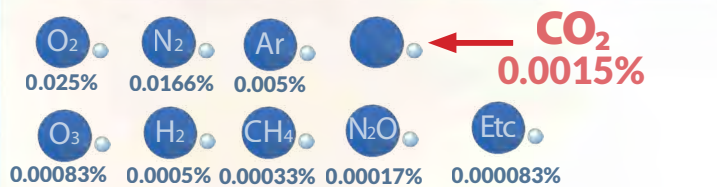
Water's Behavior in the Atmosphere

Other Gases' Behavior in the Atmosphere



No Phase Change

% = Thermal Influence, not volume.



Small Expansion Work



H₂O vs Other Gases

95.5% : 0.05%
 + 3.00% Solid State Enthalpy (SSE)
 + 1.45% Biosphere Mix
 =====
 100%

Outcome

TOTRADE™
 FEWS SYSTEM
 Food • Energy • Water • Space

Thermal Buffer Only

Limited Enthalpy Transfer (other gases: 0.05%)

H₂O: Thermal Elevator



H₂O vs CO₂
 600,000 : 1

OCEAN MASS
 Water (H₂O) > 96.5%
 CO₂ < 0.002%

ATMOSPHERE VOLUME
 H₂O (Variable) 0 to 4%
 CO₂ ~ 0.04%
 N₂ ~ 78%
 O₂ ~ 21%
 Ar ~ 0.93%

ToC Below sea avg Pressure
 -11km: 1,100 atm, Mantle: 230,000 atm

Web

Galactic Cosmic Cycles Shape Earth System Behavior

UCDMN

Low frequency GCRs

High Quantity, Extreme ionization
from heliosphere, Van Allen Belts,
all atmosphere layers to core
→ The Planck Relation.

Isotope Records show
Galactic Cosmic Ray Surges

GCR Surge Phases
~ 22 Years

Approaching Galactic
Magnetic Null Region

Declining Solar Activity
Weakens Shielding

Cycle Begins 2025

Earth System Response

Increased Atmospheric
Ionization

Violent Storms
Intense Lightning
Climate Shifts

Magnetic Stress

Geomagnetic Anomalies
Polarity Reversals

Mantle & Crust Stress

Megaquakes
Supervolcanoes
Crustal Displacement

Strategic Response

Harden
Grids & Satellites

Protect
Food & Resources

Expand
Shielded Facilities

Advance
Space Programs

Prepare for High Cosmic Radiation Phases

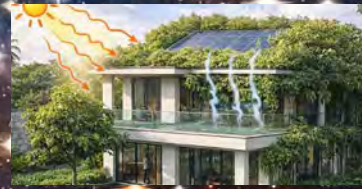
Interactive White Paper: totrade.co/o



Inadequate Housing

Climate Resilient Housing Benefits

- ✓ Passive Cooling and Heat Reduction
Water features and transpiring vegetation naturally absorb heat, cool the air, and reduce surrounding temperatures
- ✓ Improved Air Quality
Dense vegetation purifies the air by absorbing CO2 and releasing oxygen
- ✓ Food Self-Sufficiency
- ✓ Energy Efficiency
Solar panels on the green roof utilize absorbed solar heat to generate electricity, lowering energy costs
- ✓ Food Self-Sufficiency
Growing fruits like durian, lychee, and mango in the garden provides a
- ✓ Sustainable Water Management
The water features promote evaporation, regulate microclimate,



Climate Resilient Housing

ToC



totrade.co/p44

Earth as an **UCDMN** Energy Storage System

Abrupt Massive Power Discharge

Quarter to Half-Day Destruction

- Earth stores vast energy over long time
- Solar input absorbed by oceans, land, ice
- Internal heat stored in mantle and crust
- Mechanical stress builds in plates

Latent
Enthalpy

Abrupt Discharge:

- Tectonic displacement
- Tsunamis displace oceans

Abrupt Discharge:

- Abrupt extreme cooling
- Storms release latent heat



Overpressure



Ground Acceleration



Flood Momentum



Thermal Overload

- ✓ Damage scales with **Extreme Power, Not Stored Energy Alone**
- ✓ Civilization rides on the surface of a **charged storage medium**